

## 3060 All Purpose Pumps Heavy Duty Universal Service

### Design Features:

- Back Pull-out Design for Ease of Service
- Open Design Impeller
- Modular Design Concept
- Dimensional Interchangeability of Pump  
- (Up to 9 Sizes for 1 Power Frame)
- Parts Interchangeability
- Construction Accuracy - Maximum Shaft Deflection of .002"
- Long Pump Life - Bearings are Designed to Exceed 10 years During Normal Operation

### Wide Range Liquid Handling:

- Caustic Liquids
- Acid Liquids
- Heavy Liquids
- Oils and Hydrocarbons
- Paper Mill Liquors
- Grain Slurries
- Abrasive Liquids

### Typical Pump Options:

- 300 lb. ANSI Flanges
- Casing Taps
- Shaft Sleeve
- Mechanical Seal
- Jacketed Stuffing Box
- Grease Lubrication
- Water Cooled Frame
- Various Types of Bases

**Capacities to 1000 GPM  
Heads to 650 Feet TDH  
Temperatures to 500° F**

### SERVING INDUSTRIES:

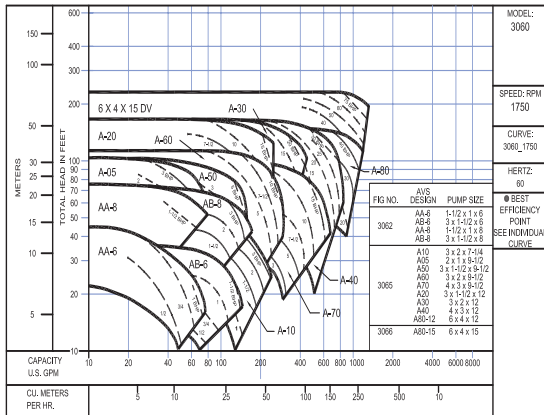
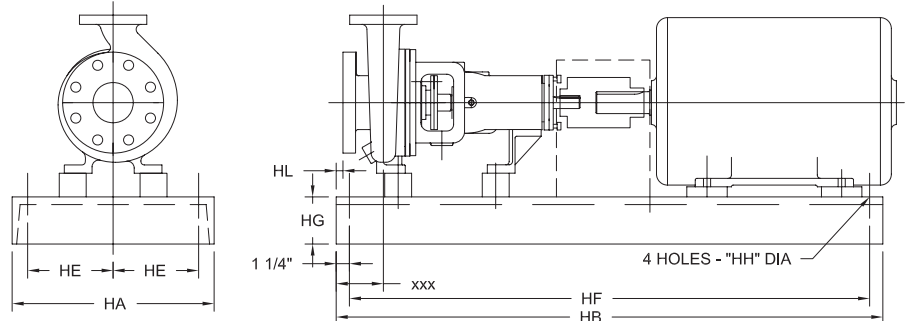
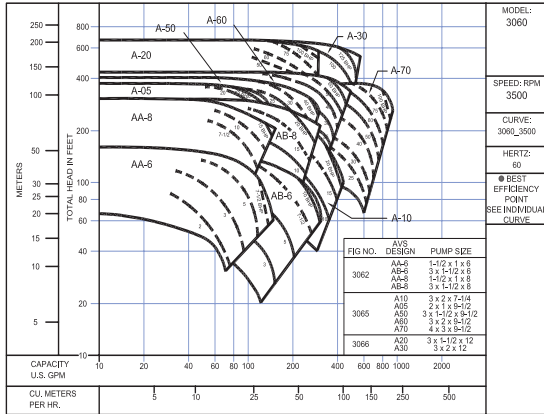
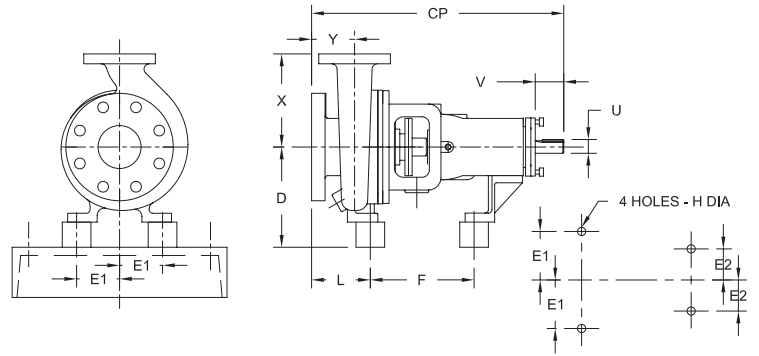
- Chemical
- Petrochemical
- Pharmaceutical
- Metal Workings
- Pulp and Paper
- Pollution
- Waste Treatment
- Sugar
- Mining

Materials of Construction	
Part No.	Materials
Casing	DI, 316, A-20
Impeller	CI, 316, A-20
Pump Shaft (No Sleeve)	1045C
Pump Shaft (With Sleeve)	1045C
Packing Box Cover	DI, 316, A-20
Packing	Graphite
Shaft Sleeve	416, 316, 440-C
Ball Bearing (Inboard)	Steel
Split Gland	DI, 316, A-20
Ball Bearing (Outboard)	Steel
Frame	CI
Bearing Cover (Inboard)	CI
Bearing Cover (Outboard)	DI



# Deming 3060 Series

Pump Dimensions - inches												
PUMP	SIZE	X	D	Y	CP	F	L	E1	E2	V	U DIA.	KEYWAY
AA	1½ x 1 x 6	6½	5¼	4	17½	7¼	4	3	NA	2½	¾	9/16 x 3/32 x 1½
AB	3 x 1½ x 6											
A05	2 x 1 x 9½	8¼	10	4	23½	12	4	4¼	3%	2%	1%	¼ x ½ x 1¼
A10	3 x 2 x 7¼											
A50	3 x 1½ x 9½											
A60	3 x 2 x 9½											
A70	4 x 3 x 9½											
A20	3 x 1½ x 12											
A30	3 x 2 x 12											
A40	4 x 3 x 12											
A80	6 x 4 x 12											



Pump Dimensions - inches									
Pump	Range Motor Frames	HA	HB	HD	HE	HF	HG MAX.	HH	HL
AA	143-184	10	35	8¼	4	32½	3	¼	¼
	213-215	12	39	8½	4½	36½	3½	¾	¼
AB	254-256	15	52	10½	6	49½	4¾	½	¾
	254-286			11¾					

Pump	Range Motor Frames	HA	HB	HD		HE	HF	HG MAX.	HH
				A05, 10, 50, 60, 70	A20, 30, 40, 80				
A05 thru A80	143-215	12	45	12	13%	4%	47½	3¼	¾
	254-286	15	52	12%	14%	6	49½	4¼	¾
	324-326	18	58	13	14%	7½	55½	4%	1
	354-365			14	14%				
	404-405	15	-	7½	57½	4%	1		
444-445	16	-							

NEMA MOTOR DATA				
HP	FRAME SIZE - TEFC			
	3500 RPM		1750 RPM	
1	-	-	182	143T
3	184	182T	213	182T
5	213	184T	215	184T
7½	215	213T	254U	213T
10	254U	215T	256U	215T
15	255U	254T	284U	254T
20	286U	256T	286U	256T
25	324U	284TS	324U	284T
30	325S	286TS	326U	286T
40	364US	324TS	364U	324T
50	365US	326TS	365US	326T
60	405US	364TS	405US	364TS
75	444US	365TS	444US	365TS
100	445US	405TS	445US	405TS
	OLD	NEW	OLD	NEW

**CRANE**  
A Crane Co. Company

**PUMPS & SYSTEMS**

Crane Pumps & Systems  
420 Third Street  
Piqua, Ohio 45356  
(937) 778-8947  
Fax (937) 773-7157  
www.cranepumps.com

Crane Pumps & Systems Canada  
83 West Drive  
Brampton, Ont. Canada L6T 2J6  
(905) 457-6223  
Fax (905) 457-2650



© 2015 Crane Pumps & Systems, Inc.  
A Crane Co. Company  
Printed in U.S.A.  
D3060BRO - Rev. B (5/15)



brands you trust.

BARNES

burks

DEMING

WEINMAN



PROSSER