



ROTATING EQUIPMENT REPAIRS

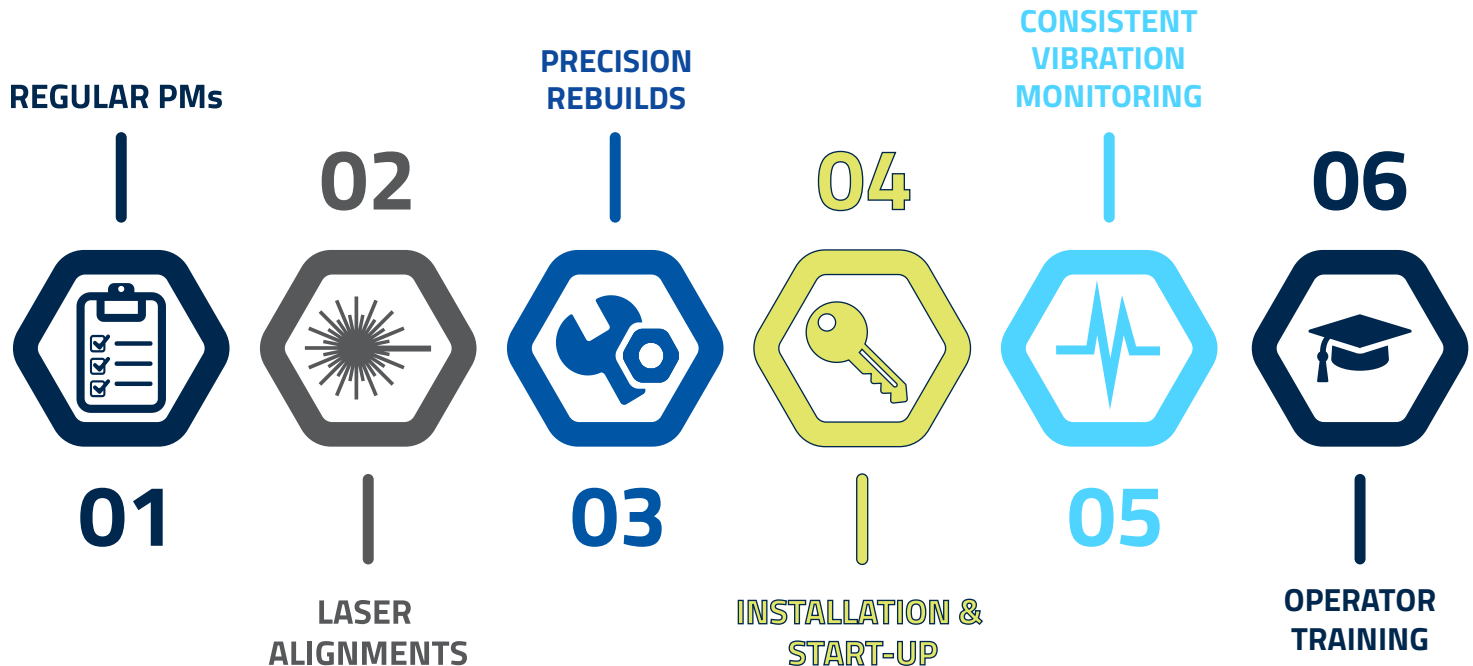
# DONE RIGHT.

*Working with your team to deliver the highest quality fluid process equipment repairs and more.*



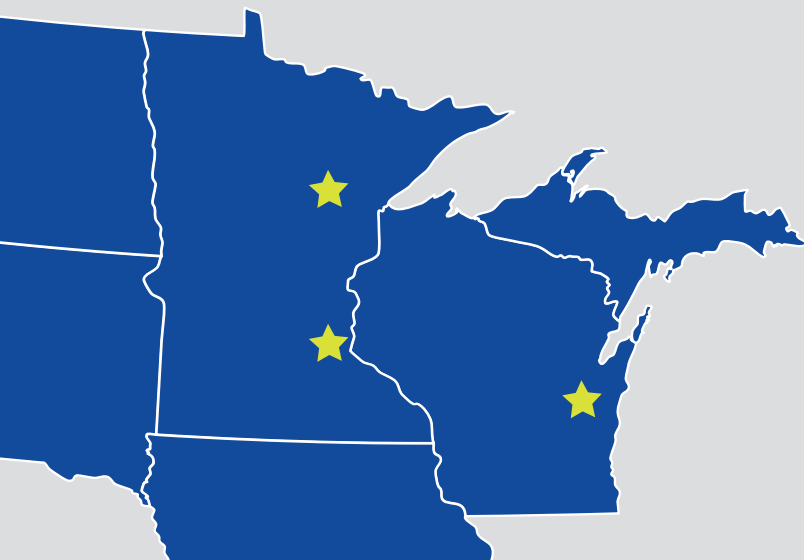


# WANT TO ELIMINATE UNPLANNED EQUIPMENT FAILURES? YOU NEED:



## DOES YOUR TEAM HAVE TIME/SKILLS FOR IT ALL?

When leveraging Crane's Service Pros, you will.



Crane Engineering's Service Pros come with the skills you need to get the best possible repair on fluid process equipment, increasing uptime in your process.

Lean on the experience of our **15+ Service Pros** to help you get started with new equipment, maintain existing equipment, make repairs at your site, or one of our **3 factory-authorized Service Centers**.



3RD PARTY ISO AUDITOR

TOP RATED

VA QUALITY, INC.

*"I have audited Crane's quality program three times since 2012. Customers can be assured they are sending their equipment to the premier service shop in the U.S."*

*- Steven Sakofsky, Principle Consultant, VA Quality, Inc.*

### ***Make your job easier:***

- No need to add and train more personnel
- Technicians that work well with yours
- Stay on top of repairs and maintenance with regular updates

### ***Quality work done by industry experts***

- Specialists in fluid process
- OEM authorized repair shop
- **1 yr warranty on OEM quality repairs**



# GET TO KNOW CRANE'S SERVICE & REPAIR SOLUTIONS



## ***EMERGENCY SERVICES***

24/7 Emergency service.  
Call 800-776-4425.



## ***REBUILD***

Pumps, gearboxes, mechanical seals, valves, grinders, screens, lift stations, and more.



## ***INSTALL & START-UP***

Single-source responsibility for process modification, equipment removal, and installation for your entire project.



## ***PREVENTIVE MAINTENANCE***

Prevent unplanned failures with a PM contract. Reduce annual maintenance costs.



## ***PREDICTIVE MAINTENANCE***

Advanced tools like vibration analysis to prevent unexpected failures.



## ***FULL SERVICE MACHINING***

Complete machine shop including CNC machines, engine lathes, horizontal boring mills, and more.



## ***EQUIPMENT EXCHANGE***

Swap out ANSI, large end suction, and AODD pumps when it's time to rebuild. Roto-Jet loaners also available.



## ***COMPLETE REHABS***

Get more life from capital equipment. Rehab lift stations, vertical turbines, clarifiers, grit systems, and more.

## FACTORY AUTHORIZED REPAIR FOR GOULDS PUMPS, PLUS:





# WE SERVICE AND REPAIR ALL MAKES AND MODELS

## **PUMPS**

- ANSI
- Paper stock
- End Suction
- Split Case
- Fan Pumps
- Submersible
- Hard Metal
- Rubber-Lined
- Self-priming
- Vertical Turbine
- Multi-stage
- Boiler Feed
- Progressive cavity
- Rotary lobe
- Gear pumps
- Screw pumps
- Air operated diaphragm
- Metering pumps
- Reciprocating pumps

## **VALVES**

- Automation
- Basis weight valves
- Low pressure steam

## **POWER TRANSMISSION**

- Gear reducers
  - Concentric
  - Cycloidal
  - Gear motors
  - Helical
  - Multispeed
  - Parallel gear
  - Planet gear
  - Screw conveyor
  - Shaft mount
  - Worm gear
- Clutches/brakes
  - Electromagnetic
  - Hydraulic
  - Mechanical
  - Overrunning
  - Pneumatic
  - Spray
  - Tension control
  - Wrap spring

## **ROTATING EQUIPMENT**

- Gear boxes
- Mechanical drives
- Mixers
- Agitators
- Rotary airlocks

## **WATER/WASTEWATER**

- Clarifiers
- Sludge Grinders
- Aeration/oxidation ditches
- Lift stations
- Screens
- Grit removers

## **BLOWERS**

- Industrial fans
- Industrial blowers
- Multi-stage centrifugal blowers
- Positive displacement blowers

## **PAPER & PRODUCTION EQUIPMENT**

- Spool repair
- Re-reelers
- Winders
- Clutches
- Brake assemblies
- Oscillators
- Motor drums
- Shredders
- Pressure screens

## **MECHANICAL SEALS**

- Split seals
- Cartridge seals

## **RECONDITIONING SERVICES**

- Impellers
- Casings
- Wear rings
- Wear plates
- Stuffing box covers
- Rotors

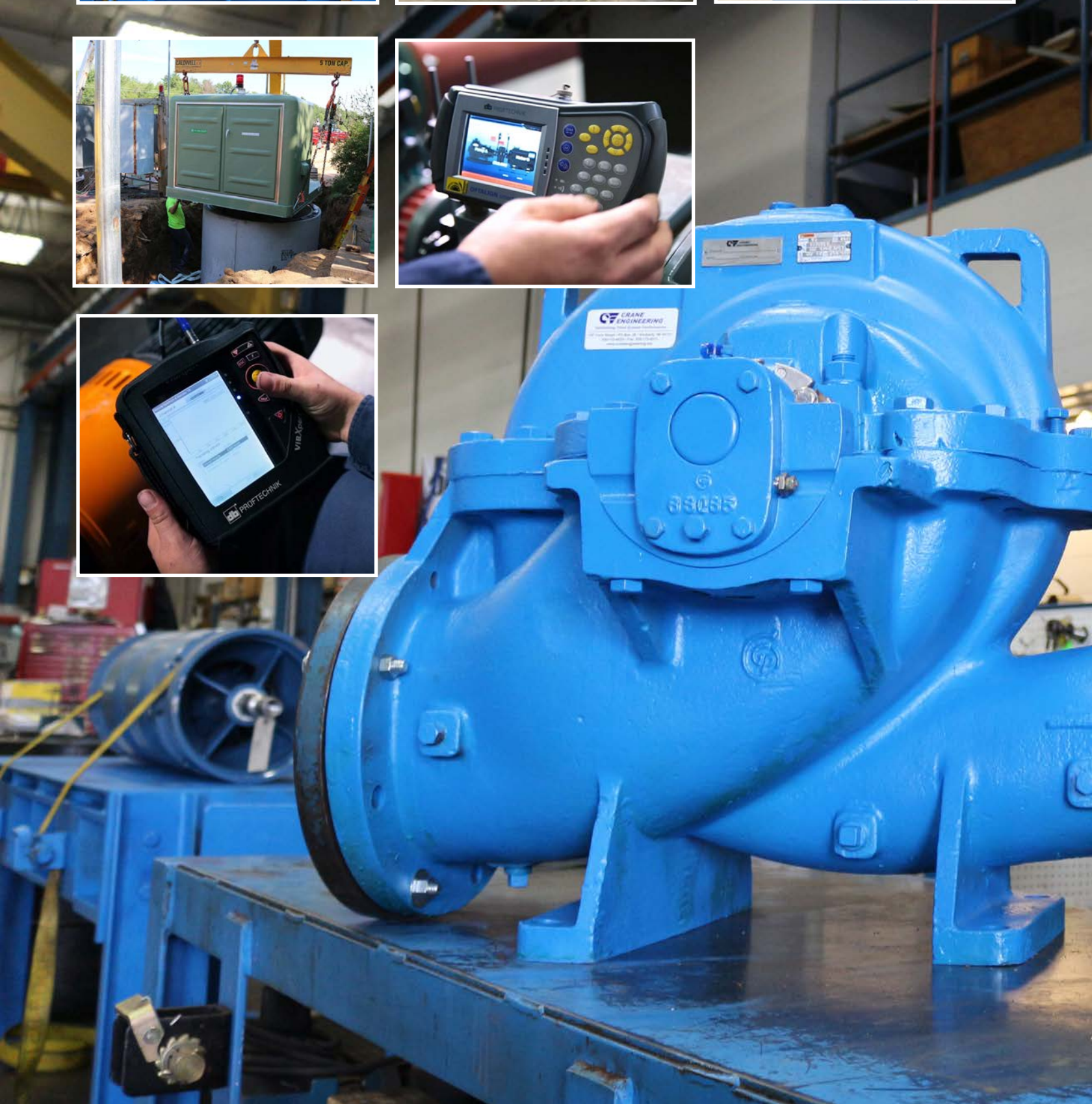


*"Crane Engineering helps us a great deal with equipment reliability. They provide us with pump and mechanical seal training and greatly improved our mechanical seal reliability."*

*"At one point, our seals were failing within a week of replacement. The company that helped us select the seals failed to support us. Crane came in, assessed the issue and helped us create an action plan to get the correct seals in place. Today we have minimal issues with our seals because we worked together to resolve them."*

*- Maintenance Supervisor*







## FOOD PRODUCTION FACILITY

### Challenge:

Customer needed to complete many pump rebuilds and mechanical seal replacements during a planned outage. They did not have enough manpower to complete this much work at one time.

### Solution:

- Provided outage support by completing rebuilds to OEM specifications
- Assessed spare parts inventory and advised the customer on which parts should be kept on hand
- Helped customer determine which parts should be ordered for outages in the future so next outage goes even smoother

### Results:

- All pump rebuilds and mechanical seal replacements were completed on time
- Pumps received OEM quality service
- No leaks or issues on start-up
- Customer is better prepared for the next shutdown

## BIO DIESEL PLANT

### Challenge:

Unable to increase production and increase profit because of frequent breakdowns, lack of parts organization, and little experience inspecting and repairing pumps.

### Goal:

Increase production by eliminating downtime.

### Solution:

- Weekly service technician visits
- Pump rebuilds completed on-site
- Equipment installed is laser aligned
- Weekly assessment of spare parts inventory
- Monthly vibration analysis checks
- Buddy system for pumps - critical pumps have an A/B version.
- Spare pump for every pump.

### Results:

- After 6 months, reliability took a positive turn
- Now produces 150% more biodiesel than before the program was implemented
- Every month is now a record breaking production month

## INVESTMENT IN RELIABILITY PAYS OFF

A Wisconsin company experienced high pump failure rates and out of control maintenance spend.

Crane Engineering created an exchange program that ensured pumps were repaired to OEM standards and a spare was always available when needed.

The company saw a reduction in maintenance spend and an increase in time between failures.



Crane Engineering  
707 Ford St  
Kimberly, WI 54136



## REPEATED FAILURES? NEED A 2ND OPINION?

*For a limited time, get a full teardown  
and inspection of fluid process  
equipment at no-cost.*

PLUS, a complete,  
photo-documented  
inspection report with  
recommendations to  
prevent another failure.



*For free pick-up, go to  
[craneengineering.net/schedule-a-pick-up](http://craneengineering.net/schedule-a-pick-up)*

