

TECHNOPOLYMER LIMIT SWITCH

DESCRIPTION

The MAX-AIR Technology MS41-2 Limit Switch Box represents a new dimension in position indication for rotary actuators. Manufactured completely in technopolymer with stainless steel fasteners and NEMA 4/4x rating, these products are corrosion resistant and suitable for the most corrosive environments.

FEATURES

QUICK SET CAMS

The operating position of the switches can be easily changed by manually adjusting the high-resolution spline cams. The cams are spring backed and will not be affected by normal vibration.

EASY WIRING

Despite its compact design, MAX-AIR switch boxes are easy to wire up with plenty of room to bring wires into the enclosure. As standard, each unit has two 1/2" NPT conduit entries, and a terminal strip which is angled to allow for ease in attaching external wires.

Technopolymer: Excellence in Anti-Corrosion



Direct Mount



Standard Mount

COMPACT DESIGN

MAX-AIR switch box has a compact construction, minimizing valve package envelope size.

HIGH VISIBILITY INDICATOR

Our high-visibility indicator offers clear location of the current valve position.

VERSIONS

Offered with two mechanical micro switches or different types of proximity sensors.

INCLUSIVE MOUNTING BRACKET

A technopolymer mounting bracket is supplied as standard and fits NAMUR top-mounting hole spacing 80mm x 30mm. The bracket allows the use of standard NAMUR stem height of 30mm, and 20mm with a coupling included in the standard kit.

Please call for further details.



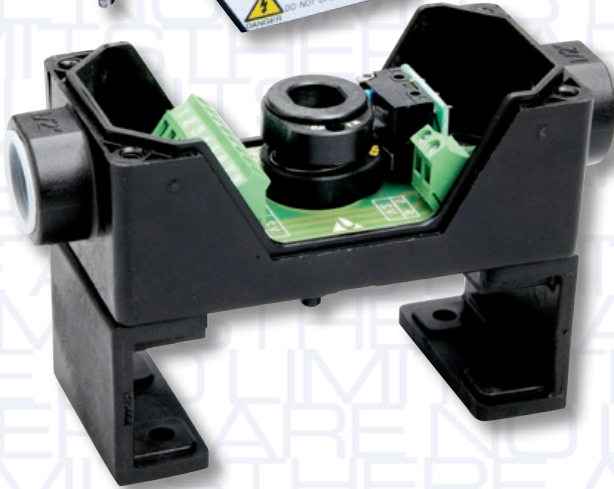
CSA approved to Classes 3211 06 and 3211 86 for Industrial Controls Equipment. Testing conducted according to the applicable sections of CAN/CSA C22/2. ANSI/UL 508 and ANSI/UL 50.

TECHNOPOLYMER LIMIT SWITCH OPTIONS

TECHNICAL DATA



Operating Force	0.60 N (61 Gram Max)
Release Force	0.06 N (6 Gram Max)
Differential Travel	.189 in
Over-travel	.032 in



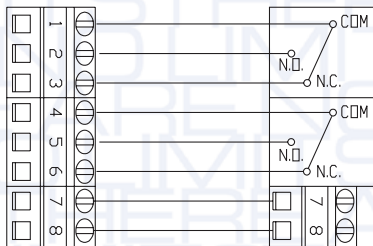
ELECTRICAL RATING

Contact Arrangement: SPDT (Form C)

Rated Voltage	Resistive Load	Inductive Load
125 VAC	5 Amp	3 Amp
250 VAC	3 Amp	2 Amp
8 VDC	5 Amp	5 Amp
14 VDC	5 Amp	4 Amp
30 VDC	4 Amp	3 Amp
125 VDC	0.4 Amp	0.4 Amp
250 VDC	0.2 Amp	0.2 Amp

SPDT MECHANICAL SWITCHES with 8-Point Terminal Strip on a printed circuit board.

WIRING DIAGRAM



Switch #1
Up-Open

Switch #2
Under-Closed

Solenoid Valve
Pass Thru

MATERIAL

Item	Material
Box	Technopolymer
Brackets	Technopolymer
Position Indicator	Technopolymer
Fasteners	Stainless Steel
Seals	BUNA-N
Operating Shafts	Technopolymer
Cams	Technopolymer
Microswitches	Technopolymer
Electrical Board w/Clamps	Polyamide

INDUCTIVE PROXIMITY SENSORS

Normal voltage [v]	8
Current consumption	N/A
Sensing face covered [mA]	1
Sensing face free [mA]	3
Switching frequency [Hz]	1000
Self inductance [mH]	50
Self capacitance [nF]	35
Protection	IP65/ NEMA 4/4x
Operating Temp. [°F]	-13° to 212°

