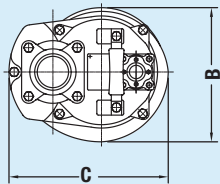
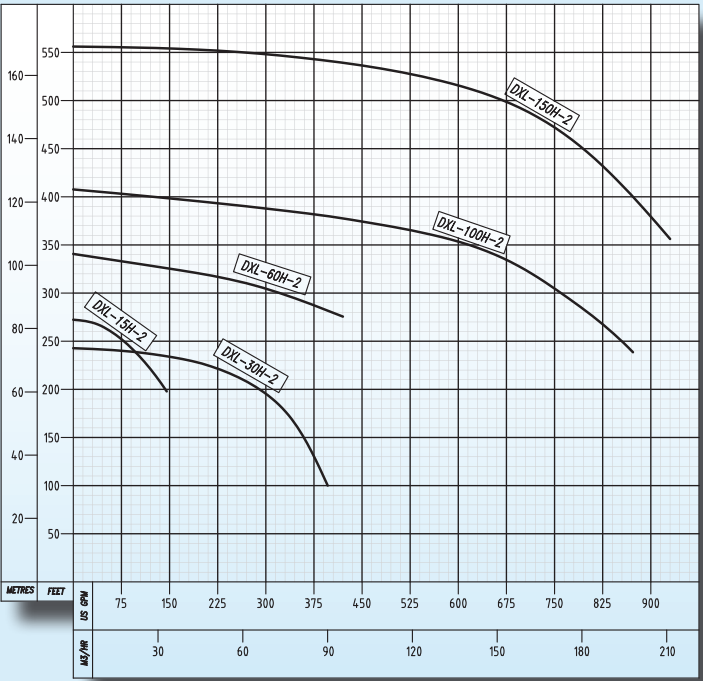
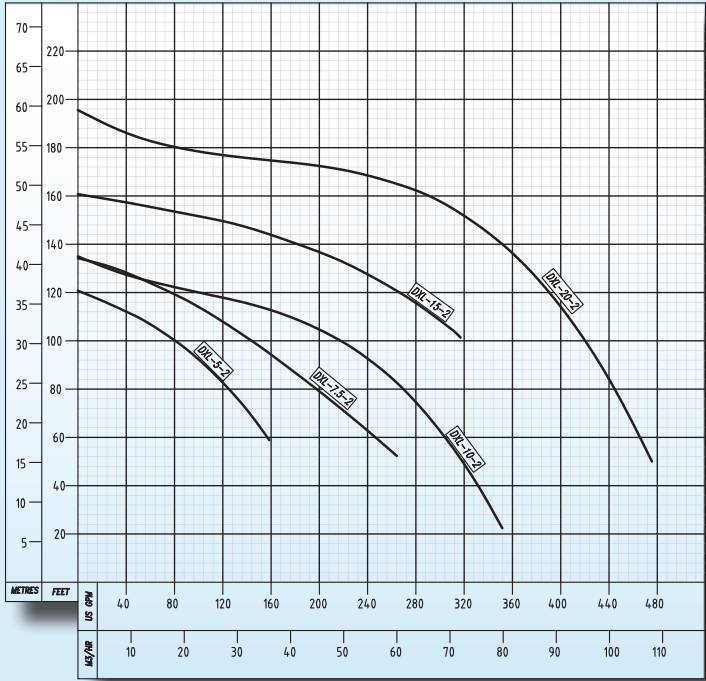


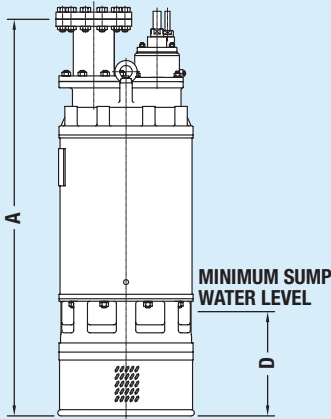
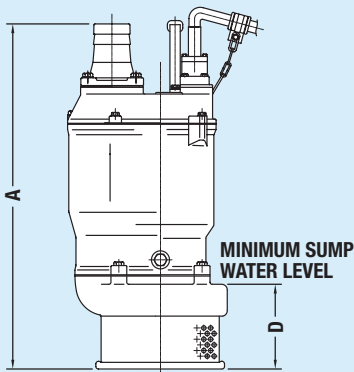
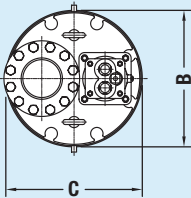
DXL - LOW HEAD

DXL - HIGH HEAD



Dimensions					
	DXL 5-2	DXL 7.5-2	DXL 10-2	DXL 15-2	DXL 20-2
A - inch (mm)	26.3	26.5	29.5	31.1	33.1
B - inch (mm)	10.0	10.3	12.4	13.6	13.6

Dimensions					
	DXL 15H-2	DXL 30H-2	DXL 60H-2	DXL 100H-2	DXL 150H-2
A - inch (mm)	43.5	44.5	63.0	63.0	66.9
B - inch (mm)	14.6 (370)	18.5 (470)	21.7 (550)	22.0 (558)	23.6 (600)



ECONOMICAL SUBMERSIBLE DXL

Toyo Pumps North America
Corporate Head Office
1550 Brigantine Drive
Coquitlam, B.C.
Canada V3K 7C1



For more information please visit
www.hevypumps.com

Reliable, heavy-duty dewatering pumps at a low cost

The information that has been provided within the pages of this brochure has been compiled in good faith and to the best of Toyo Pumps North America's ability. However, the authors of this document make no warranty, of any kind, expressed or implied, and will not be held responsible, or liable for errors, or omissions resulting in any loss or damage caused or alleged to be caused, directly, or indirectly, by information contained within. Information is also subject to change at the discretion of Toyo Pumps North America.

Copyright Toyo Pumps North America 2016. All rights Reserved.
PBR-DXL-EN-R1

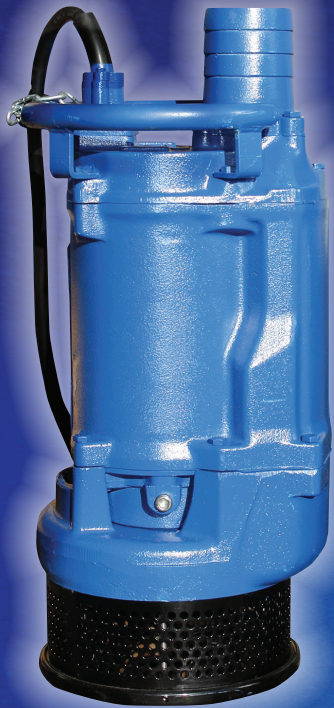


www.hevypumps.com



Reliable,
heavy-duty
dewatering
pumps at
a low cost

Toyo's DXL submersible series is a dependable and economical solution to all your drainage and dewatering needs. Available in powers ranging from 5 HP -150 HP, these low cost pumps can reach heads up to 525 ft and capacities up to 700 USGPM. DXLs can pump up to 2% solids and are able to operate in water levels as low as 6 inches (approx).



MATERIAL FEATURES

DXL - LOW HEAD

DXL 5 - DXL 20

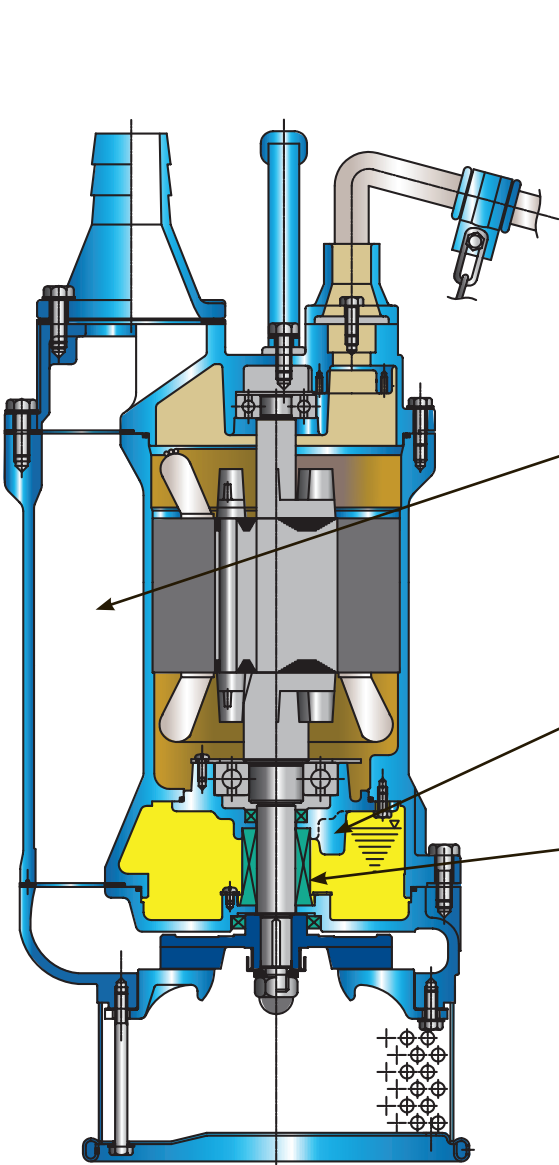
- **Impeller** – Cast Iron
- **Wear Plate** – Cast iron
- **Casing** – Cast iron
- **Mechanical Seal** – Silicon Carbide
- **Motor Frame** – Cast Iron
- **Shaft** – 410 SST
- **Fasteners** – 304 SST
- **Cable** – 2PNCT

DXL - HIGH HEAD

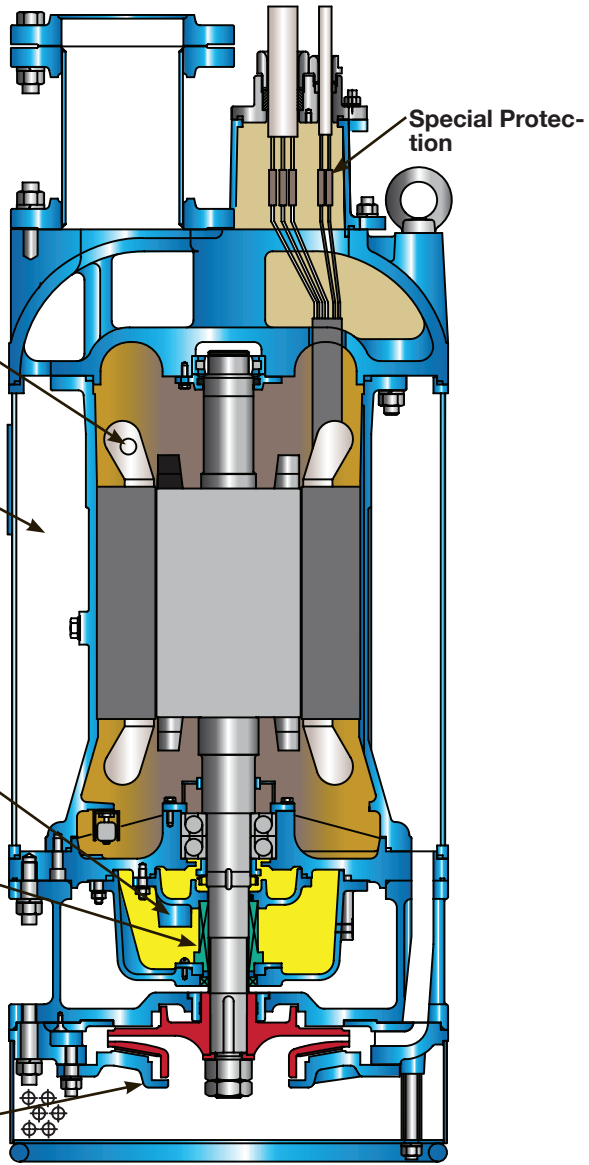
DXL 15H - DXL 150H

- **Impeller** – High Chrome
- **Wear Ring** – Cast iron
- **Casing** – Cast iron
- **Mechanical Seal** – Silicon Carbide
- **Motor Frame** – Mild Steel
- **Shaft** – 403 SST (for 15H & 30H)
Carbon Steel (for 60H – 150H)
- **Fasteners** – 304 SST
- **Cable** – 3PNCT

DXL - LOW HEAD



DXL - HIGH HEAD



Pump Characteristics	LOW HEAD					HIGH HEAD				
	DXL-5-2	DXL-7.5-2	DXL-10-2	DXL-15-2	DXL-20-2	DXL-15H-2	DXL-30H-2	DXL-60H-2	DXL-100H-2	DXL-150H-2
Discharge Diameter - inch (mm)	2 (50)	3 (80)	4 (100)	4 (100)	4 (100)	3 (80)	4 (100)	6 (150)	6 (150)	6 (150)
Discharge Connection Type	Hose Coupling	Hose Coupling	Hose Coupling	Hose Coupling	Hose Coupling	FNPT Flange	FNPT Flange	FNPT Flange	FNPT Flange	FNPT Flange
Flow at rated point - USGPM (m3/min)	52.8 (0.2)	158.5 (0.6)	211.2 (0.8)	264 (1.0)	317 (1.2)	132 (0.5)	264 (1.0)	264 (1.0)	528 (2.0)	528 (2.0)
Head at rated point - ft (m)	98.5 (30)	82 (25)	98.4 (30)	114.8 (35)	131 (40)	210 (64)	197 (60)	295 (90)	361 (110)	525 (160)
Impeller Type	Semi-Open	Semi-Open	Semi-Open	Semi-Open	Semi-Open	Semi-Open*	Closed	Closed	Closed	Closed
Impeller Diameter - inch (mm)	5.9 (150)	6.6 (168)	6.7 (170)	7.1 (180)	7.7 (195)	6.6 (167)	8.0 (202)	9.9 (251)	11.2 (285)	13.0 (330)
Maximum Solid Size - inch (mm)	0.3 (8)	0.3 (8)	0.3 (8)	0.3 (8)	0.3 (8)	0.24 (6)	0.4 (10)	0.4 (10)	0.4 (10)	0.4 (10)
Weight - lb (kg)	150 (68)	187 (85)	243 (110)	364 (165)	397 (180)	518 (235)	705 (320)	1653 (750)	1697 (770)	2425 (1100)
Motor Size - HP (kW)	5 (3.7)	7.5 (5.5)	10 (7.5)	15 (11)	20 (15)	15 (11)	30 (22)	60 (44)	100 (75)	150 (110)
Speed - RPM	3600	3600	3600	3600	3600	3600	3600	3600	3600	3600
Voltage - V (at 60Hz)	460	460	460	460	460	460/575	460/575	460/575	460 (575)	460/575
Rated Current (amps)	7	9	13	19	26	18/15	37/30	74/59	124/99	178/145
Starting Method	Direct-on-Line	Direct-on-Line	Direct-on-Line	Direct-on-Line	Direct-on-Line	Direct-on-Line	Direct-on-Line	Star-Delta	Star-Delta	Star-Delta

* - 2-stage pump