

# CRANE ENGINEERING

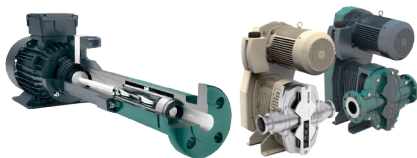
Fluid Process Equipment | Service & Repair | Installation | Skid Systems | Valve Automation

## PUMPS

**GOULDS PUMPS** Horizontal and vertical process pumps. Available for mining market only



**NETZSCH** Progressive cavity, rotary lobe, multi-screw pumps, and heavy-duty peristaltic hose pump



**WSP** Self-priming centrifugal pumps



**GOULDS WATER TECHNOLOGY** Multi-stage, general service and submersible centrifugal pumps

**GRUNDFOS** Multi-stage centrifugal and positive displacement metering pumps

**HEVY PUMPS** Heavy-duty submersible, horizontal and vertical abrasive slurry/solids handling

**BJM Pumps** Submersible pumps

**ROTOJET** High pressure single stage water pumps

**PACO GRUNDFOS** General service centrifugal pumps  
**FLOWAY PUMPS** Vertical turbine centrifugal pumps

**WEMCO PUMP** Screw and vortex solids handling centrifugal pumps

**SANDPIPER** Sandpiper industrial and sanitary air-operated double diaphragm pumps

**DISCFLO** Disc, cantilever, glass-lined, horizontal, sanitary, submersible, and multi-stage pumps

**Fristam PUMPS** Sanitary centrifugal, circumferential piston, rotary lobe and twin screw pumps

**SPXFLOW >APV** Pumps, valves, heat exchangers, homogenizers

**SPX Waukesha Cherry-Burrell** SPX-Waukesha Cherry-Burrell sanitary positive displacement and centrifugal pumps

**FLUX** Sanitary drum pumps

**SETHCO Thermoplastic Pumps** Corrosion resistant, drum, and magnetic drive pumps

**ProCast.** Replacement pumps and parts for Durco Mark 3 and Sulzer APT

**PROPART QUALITY PUMP PARTS** Replacement pumps and parts for Sulzer CPT and APT

**Franklin Electric** Multi-stage, general service and submersible centrifugal pumps

**PIONEER PUMP PERFORMANCE THROUGH INNOVATION** Self-priming centrifugal pumps

## MECHANICAL SEALS & COUPLINGS



Mechanical seals, packing, seal support  
Top and side entry sanitary mixers

## MIXERS



Top and side entry sanitary mixers



Shear blender, power/liquid blending systems



Sanitary static mixers

## VALVES



Industrial carbon and stainless steel and alloy ball valves for manual, automated and control applications



Two & three piece, full, reduced & multi-port design, flanged, threaded, socket weld for manual, on/off and control



High temperature, high pressure, digester blow valves, metal seated trunnion mount, phantom port, double block and bleed ball valves



ANSI Class high performance and resilient seated butterfly valves for a wide range of applications, manual or automated



Ductile iron body, cartridge style seat butterfly valves up to 48"



High performance carbon and stainless steel body butterfly valves with soft or metal seats

**CRANE FKX**

Triple offset butterfly valves for extreme low and high temperature applications



Carbon and stainless steel high performance butterfly valves, iron body resilient and PTFE seated butterfly valves



USA manufactured pinch valves, duckbill and wafer check valves, ISO rings and pressure sensors



Gate, globe and check valves in cast iron, carbon and stainless steel



Non-slam, spring assisted stem guided check valves up to Class 2500



ITT Fabri industrial knife gate valves for the pulp and paper, power and mining industries



Steam specialties; traps, strainers, separators, flash recovery, pressure and temperature control valves, steam motive pumps



A leading manufacturer of industrial thermoplastic valves and accessories

## ACTUATORS/AUTOMATION



Pneumatic rack & pinion, skotch yoke and electric actuators and accessories for valve automation and control



Electric On/Off, Modulating quarter turn actuators



Temperature sensors and assemblies including thermocouples, RTDs, PT100s, Thermowells and accessories



Three & four way solenoid valves

## AIR HANDLING



Liquid ring and rotary vane vacuum pumps, blowers, compressors, packaged systems

## HEAT EXCHANGERS



Plate and frame heat exchangers, replacement parts, and service

## FILTERS



High capacity self-cleaning water filters