

CORROSION RESISTANT PRODUCTS

*Chemical Resistant Flooring | Floor Leveling & Pitching
Tank Repair & Inspection | Turnkey Capabilities*

FLOORING & LININGS



Urethane cement mortars and epoxy flooring



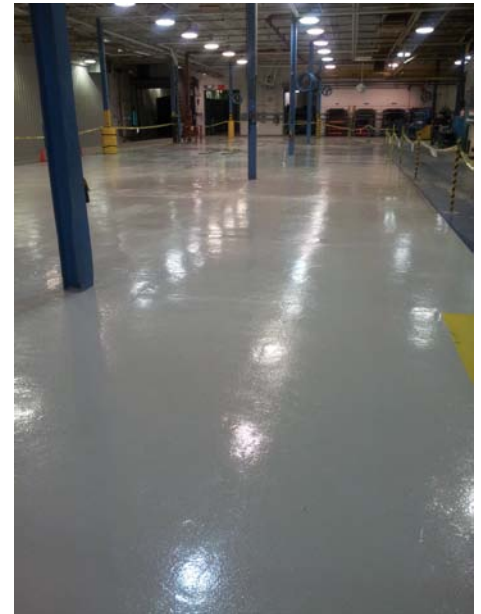
Decorative flake, quartz, metallic flooring and waterproof membranes



Epoxy, novolac, vinylester flooring and tank linings; pourable grout



Epoxy and vinylester high performance tank linings; interior and exterior



FIBERGLASS & GRATING



Pultruded and molded fiberglass panels, platforms, stairways, handrails, and structural members; pourable grouts



FRP siding and roof decks

TANKS & COVERS



Plas-Tanks
INDUSTRIES, INC.

Custom fiberglass tanks and salt brine systems



Polyethylene tanks and containment vessels



FRP flat tank covers



Call 920-733-4425 or go to www.craneengineering.net

REPAIR JOBS

Tank Lining



After years of service, the corrosive effects of this food ingredient had taken its toll. The tank needed a new lining. During a scheduled down, and under confined space requirements, Crane Engineering got to work.

First, the lining was sandblasted to remove all traces of rust and corrosion. Once the surface was clean, FDA approved 7133 epoxy coated the tank and supporting angle iron, bringing this restoration project to an end. Installation was completed within the scheduled timeframe and the tank was ready for use when production resumed.

Flooring



This 7000 square foot packaging room at a local food manufacturer needed to be FDA compliant. A scheduled downtime provided the opportunity to get started.

The existing coating needed to be removed. Shot blasting the surface provided a clean, sound substrate for adhesion. Due to the amount of traffic, a 1/4" non-skid floor was installed to reduce slippage and promote safer working conditions. Finally a 100% solids polymer sealer was used to create a seamless surface - making it easy to clean and maintain.

Dome Cover



A fiberglass dome cover at a local wastewater treatment plant was in desperate need of repair. It showed signs of delamination and deterioration - common problems when exposed to the elements.

To begin restoration, the deteriorated coatings were removed. A combination of waterblasting and sandblasting cleaned the surface and prepared the dome for its new coating. Last, an epoxy primer was applied as a base, promoting adhesion to the UV resistant polyurethane top coat while ensuring long lasting protection.